



EasyTrace

Well Log Analysis

EasyTrace is a multi-disciplinary 1D data processing and editing tool, featuring within a very productive package a wide range of functionalities for geologists, geophysicists and reservoir engineers.

Integrated Log Processing

Well data are often acquired in different formats, with different sampling rates, requiring appropriate processing for modern geological modeling. Geophysical and geological reservoir characterization both require specific log processing and editing, for example rock-typing from logs and cores, seismic signature analysis, and AVO Feasibility analysis.

EasyTrace takes advantage of a true spreadsheet environment that offers advanced 1D data editing, analysis and processing functionalities to help geoscientists in their daily work. EasyTrace is now plugged on OpenFlow platform and shares all its powerful capabilities with all the OpenFlow Suite Applications, especially TemisFlow and FracaFlow.

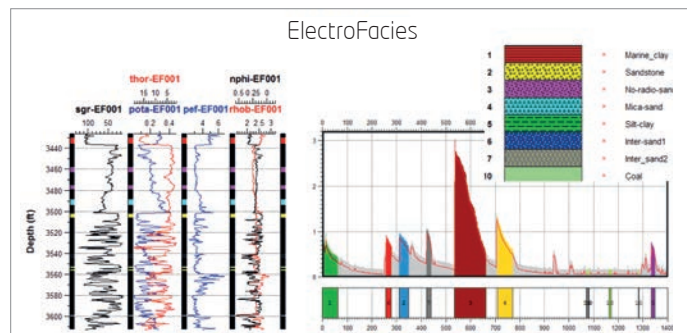
Workflows

- Data Management:
 - Import and export the main formats used in the industry such as LAS, ASCII, SEG-Y.
 - Manipulation of any kind of 1D data: continuous and discrete logs, cores and SCAL, markers, in time and depth domain, with different sampling.
 - Easy data edition, availability of various processing and computation functionalities.
 - Direct links with OpenFlow Suite and InterWell for data exchange.
- Main geoscientific functionalities:
 - Well-designed geophysical-oriented functionalities such as signal simulation, trace smoothing and filtering, sonic log correction, velocity estimation, AVO/AVA modeling.
 - Advanced modules to answer specific issues at wells such as TOC estimation, pore pressure prediction, rock physics.
 - Renowned rock-typing workflow including electrofacies with supervised and non-supervised methods, core analysis integration, water saturation modeling.

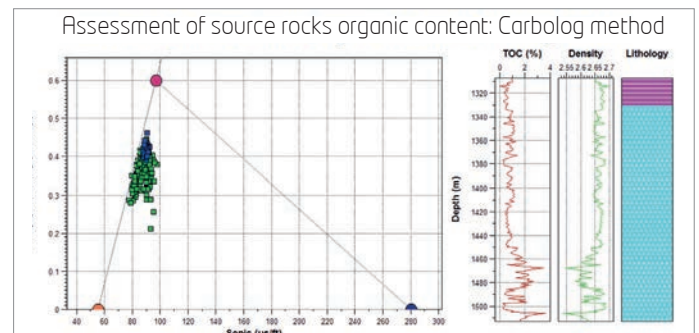
- Data display :
 - Using both tables and graphs such as (multi-)tracks display for logs, histograms, cross-plots or SCAL curves.
 - Enhanced graphic settings and interactivity between plots.
- EasyTrace is the natural pre-processing tool for different workflows:
 - Electrofacies determination for matrix characterization.
 - Data preparation for lithoseismic inversion (using InterWell for example).
 - Fracture data analysis.
 - Plug data management like KrPC and classification for rock-typing.

Key Benefits

- **Powerful and versatile toolbox to analyse and process 1D data. No equivalent in the industry in terms of versatility.**
- **AVO/AVA/AVAZ analysis & modeling.**
- **Advanced Petro-elastic modelling & log substitution.**
- **Easy to learn and put in action.**
- **Multiple and proven techniques for electrofacies analysis, not part of an expensive petrophysical analysis package.**
- **Advanced Rock-typing for the Reservoir Engineer.**



The Electrofacies application is dedicated to the determination of the electrofacies with or without a priori information. Here is shown a non-supervised approach, with the estimated density function. We assign the same electrofacies code to series of samples that lie in the same high density region. The samples that receive an electrofacies code are then used as the training population to build the assignment function with.



Estimate the Total Organic Carbon (TOC) of a set of samples in a table from measures of their sonic transfer time (DT) and resistivity (Rt) using the CARBOLOG method. On the left, the samples are displayed on a DT-1/Rt^{1/2} diagram. The matrix, shale and organic matter (OM) pole positions are also displayed on this diagram for the current sample selection.



Beicip-Franlab Asia

Suite 17-05, 17-06, 17-07, G-Tower, 199 Jalan Tun Razak, 50400 Kuala Lumpur, Malaysia
 Tel: +603 2165 1700 Fax: +03 2165 1709
 E-mail: info@beicip.asia

www.beicip.asia